

Limitorque Certified Data Sheet

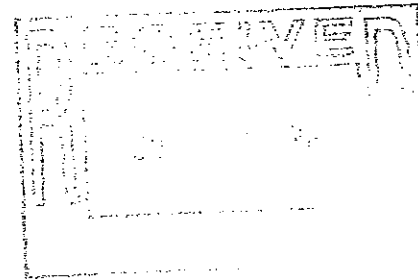
Customer Name: **NEWEMANS INC**

Customer P.O. Number: **4373**

ITEM NUMBER		.005	.007	.008	.009
A C T U A T O R D A T A	Type and Size	L120-40	L120-190	L120-20	L120-10
	Enclosure Type	WP	WP	WP	WP
	Unit RPM	24	196	36	36
	Heater Volt/Watts	120/20	120/20	120/20	120/20
	MDPI Supplied	Supplied	Supplied	Supplied	Supplied
	Pot Supplied	NOT Supplied	NOT Supplied	NOT Supplied	NOT Supplied
	Handwheel Diameter	24"	18"	18"	12"
	Gear Box Type/Ratio	N/A	B320-70/6:1	N/A	N/A
	Gear Box Position	N/A	NA	N/A	N/A
	Gear Box SGA	N/A	N/A	N/A	N/A
	Outline Drawing	03-612-0014-1	03-613-0097-1	03-612-0014-1	03-612-0014-1
	Wiring Diagram	17-499-0070-3	16-476-1183-3	17-499-0070-3	17-499-0070-3
M O T O R D A T A	Motor Size	15#	80#	7.5#	3#
	Motor Voltage	460	460	460	460
	Motor Phase	3PH/60HZ	3PH/60HZ	3PH/60HZ	3PH/60HZ
	Motor Horsepower	1.00	10.30	0.50	0.20
	Motor RPM	1700	3400	1700	1700
	Motor LRA	17.80	116.40	8.00	4.05
	Motor FLA	2.50	15.10	1.50	1.05
	Motor Heater:	120/10	120/10	120/10	120/10
TAGGING		1HR-HV-1532, 2532 AND 3532	1HR-HV-1411, 2411 AND 3411	1HR-HV-1440, 2440 AND 3440	1HR-HV-1460, 2460 AND 3460

Tagging and Information:

BASE ATTACHMENT SUPPLIED PER FORM # 2 - ITEMS .005, .008 & .009



- HOLD - Production is being held pending your approval. Please return one copy of each drawing and this sheet with your approval or changes.

- RELEASE - Please advise us at once should you require any changes or corrections, as we are proceeding to manufacture in accordance with the above information.

LIMITORQUE CORPORATION

P.O. Box 11318, Lynchburg Va 24506

Name: **JL/BT**

No. **A**

By: **JL**

Date: **06/27/01**

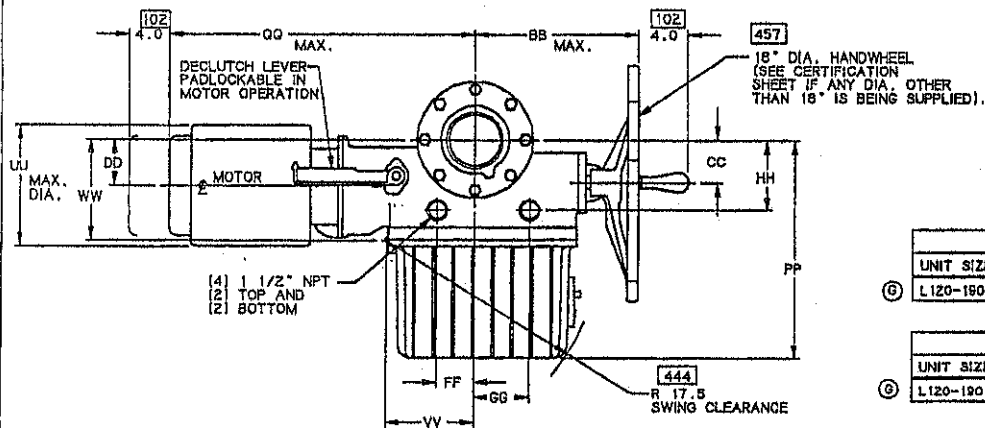
Date: **06/15/01**

Revision

Certification Sheet
Drawing Number

14492

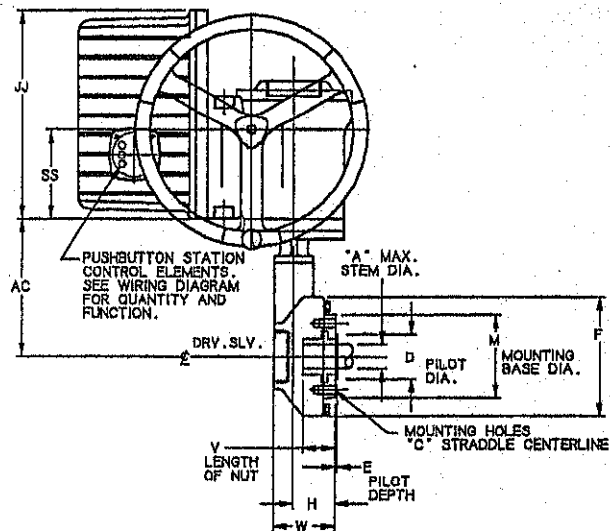
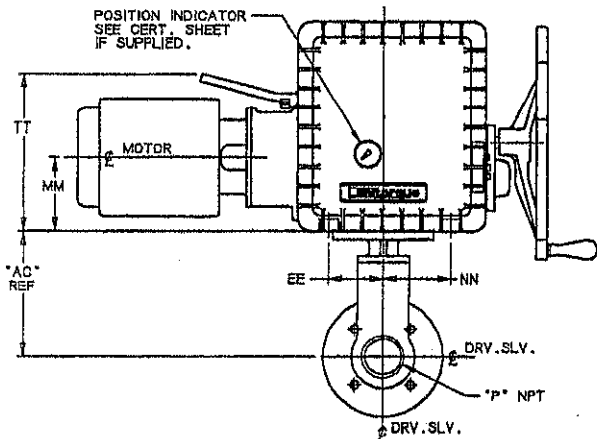
Sheet 2 of 4



REVISIONS			BY	DATE	APP'D
REV	DESCRIPTION				
C	UPDATE 'A' AND 'M' DIMENSIONS		CCR	2-90	RGP
D	UPDATE FORMAT; CHANGED TO 'I' SIZE		CCR	2-20 1995	KGR
E	ADD '190'		CCR	7-25 1996	KGR
F	CORRECTED 'D' DIMENSION		CCR	1-31 1997	KGR
G	DELETED L120-80		CCR	7-14 2000	KR
H	ADDED B320-50, 70, 80		CHA	8-20 2001	MF

L120 ACTUATOR OUTLINE DIMENSIONS (INCHES)																	
UNIT SIZE	BB	CC	DD	EE	FF	GG	HH	JJ	MM	NN	PP	QQ	SS	TT	UU	VV	WW
⑥ L120-190	15.5	4.4	4.4	5.1	5.1	5.5	5.2	18.0	6.6	5.5	21.2	32.2	7.5	14.7	12.5	8.0	12.1

L120 ACTUATOR OUTLINE DIMENSIONS (METRIC)																	
UNIT SIZE	BB	CC	DD	EE	FF	GG	HH	JJ	MM	NN	PP	QQ	SS	TT	UU	VV	WW
⑥ L120-190	394	112	112	130	130	140	208	457	168	140	538	818	191	373	318	203	307

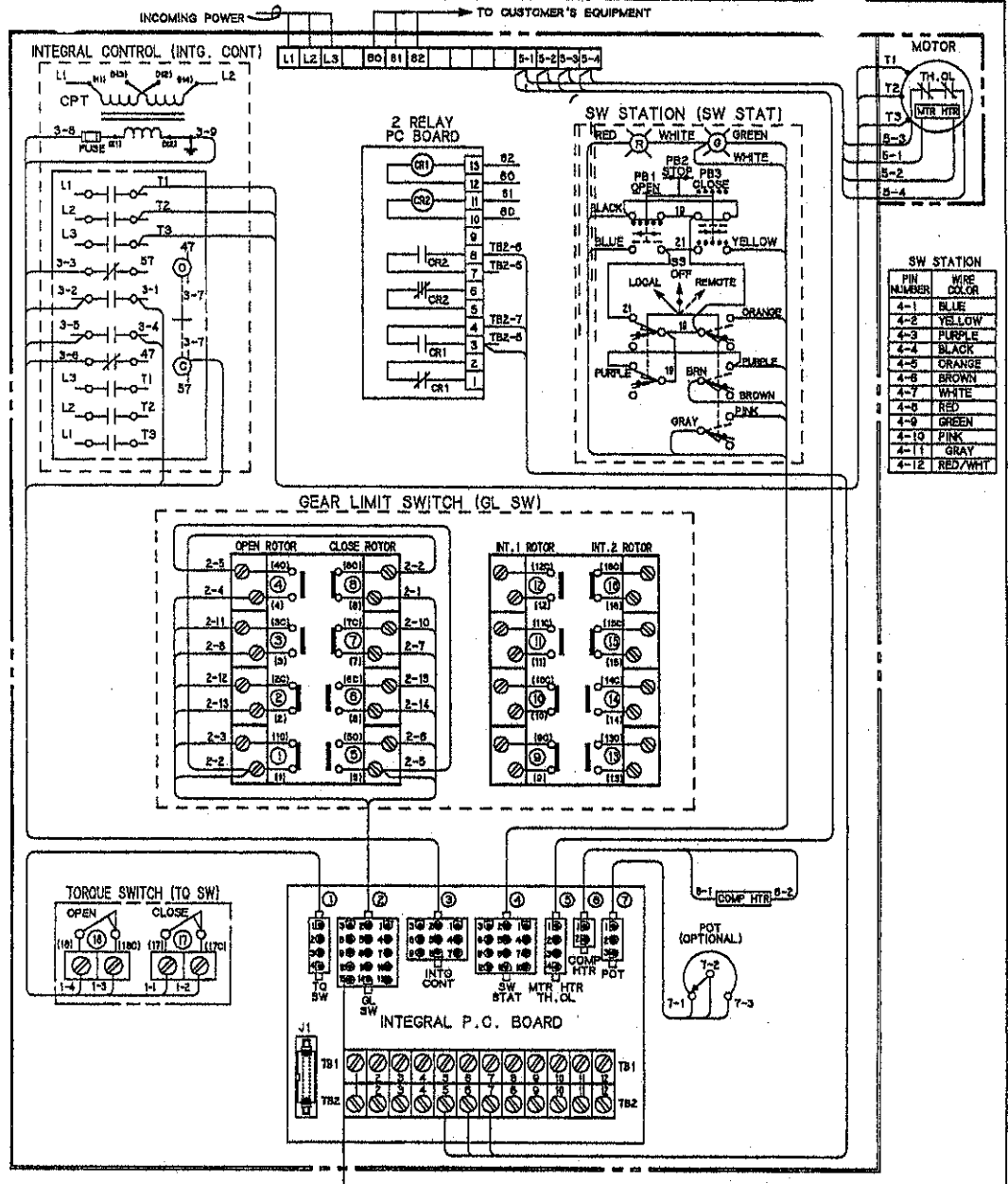
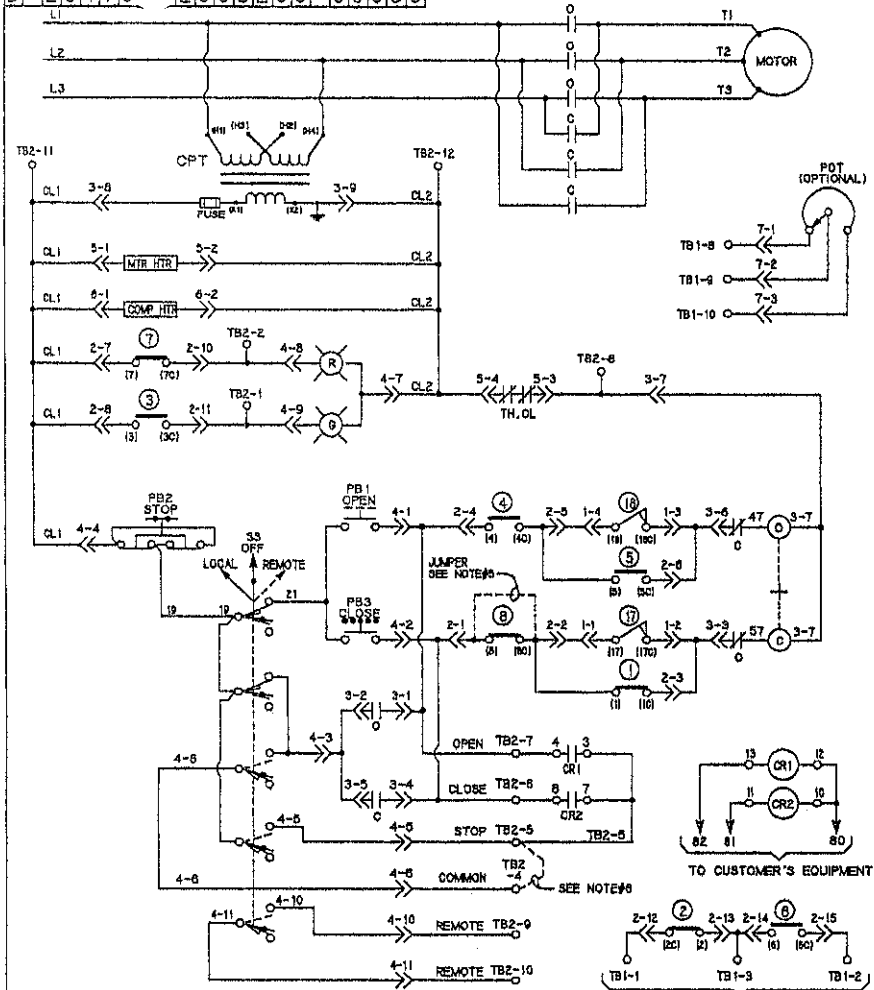


⑧ *B* SERIES BEVEL GEAR OPERATOR DIMENSIONS (INCHES)-USA STD MTD CONFIGURATION (08U)											
UNIT SIZE	A	C	D	E	F	H	M	P	V	W	AC
B320-50	3.54	(8)15/8-11 X 1.38 DP., 10,000 B.C.	6,000/5,997	.20	14.0	5.0	11.8	5"	4.10	7.1	10.4
B320-70	4.00	(8)13/4-10 X 1.77 DP., 11,748 B.C.	7,000/6,997	.20	16.8	5.7	19.8	5"	4.76	7.8	12.4
B320-80	5.12	(8)1 1/4-7 X 2.76 DP., 14,000 B.C.	8,500/8,497	.20	19.7	6.5	16.1	6"	5.91	9.1	14.0

⑧ *B* SERIES BEVEL GEAR OPERATOR DIMENSIONS (METRIC)-ISO STD MTD CONFIGURATION (08I)											
UNIT SIZE	A	C	D	E	F	H	M	P	V	W	AC
B320-50	89.0	(8)M16-2 X 35 DP., 254 B.C.	189.95/189.88	5.1	358	127	300	5"	104.1	180	264
B320-70	102	(8)M20-2.5 X 45 DP., 298 B.C.	229.95/229.88	5.1	427	145	350	5"	121.8	198	315
B320-80	130	(8)M30-3.5 X 70 DP., 358 B.C.	259.94/259.87	5.1	500	165	410	6"	150.1	231	356

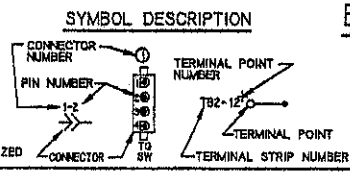
DRAW CCR	DATE 11-29-88	LIMITORQUE CORPORATION 214 VECAL ROAD, LYNCHBURG, VIRGINIA 24502-1276
CHG'D RA	DATE 11-29-88	
APPROVED RGP	DATE 11-29-88	TITLE L120-190 UNITS WITH: MINIMUM INTEGRAL COMPARTMENT "B320" SERIES BEVEL GEAR OPERATOR USA (08U) AND ISO (08I) MOUNTING BASES
UNLESS OTHERWISE SPECIFIED DIMENSIONS ARE IN INCHES		SCALE NONE
SIZE A		ORDER NO 03-613-0097-1
		REV H

B-2617L 2005200-06030



VALVE SHOWN IN FULL OPEN POSITION				FUNCTION
ROTOR	CONTACT	POSITION	DEVELOPMENT	
OPEN	1	1	1	BY-PASS CIR INDICATION
	2	2	2	IND LIGHT
	3	3	3	OPEN LIMIT
	4	4	4	BY-PASS CIR INDICATION
CLOSE	5	5	5	IND LIGHT
	6	6	6	CLOSE LIMIT
	7	7	7	SPARE
	8	8	8	SPARE
INT. 1	9	9	9	SPARE
	10	10	10	SPARE
	11	11	11	SPARE
	12	12	12	SPARE
INT. 2	13	13	13	SPARE
	14	14	14	SPARE
	15	15	15	SPARE
	16	16	16	SPARE

- NOTES**
1. --- OPEN CONTACT
 2. --- CLOSE CONTACT
 3. ROTORS INT. 1 & INT. 2 CAN BE SET AT VALVE POSITION FULL OPEN, FULL CLOSED OR ANY POSITION IN BETWEEN AS INDICATED BY POINTS A AND B.
 4. TRANSFORMER CONNECTION FOR HIGH VOLTAGE CONNECT H3 TO H2, H1 TO L1 AND H4 TO L2. FOR LOW VOLTAGE CONNECT H1 & H3 TO L1 AND H2 & H4 TO L2.
 5. ADD JUMPER ON L5#0 BETWEEN TERMINALS (B1 & B2) FOR TORQUE SEATING VALVES.
 6. IF A REMOTE SIGNAL IN CIRCUIT IS REQUIRED ADD JUMPER BETWEEN TB2-4 & TB2-3 ON PC BOARD.
- LEGEND**
- O-OPEN CONTACT
 - C-CLOSE CONTACT
 - ⊖-OPENING COIL
 - ⊕-CLOSING COIL
 - ⊖-CPT-CONTROL POWER TRANSFORMER
 - +MECHANICAL INTERLOCK
 - TH, OL-THERMAL OVERLOAD CONTACTS
 - ⊖-RED INDICATING LIGHT
 - ⊕-GREEN INDICATING LIGHT
 - S3-SELECTOR SWITCH (LOCAL-OFF-REMOTE)
 - PB1-STOP PUSHBUTTON
 - PB2-STOP PUSHBUTTON
 - PB3-CLOSE PUSHBUTTON
 - COMP HTR-COMPARTMENT HEATER
 - MTR HTR-MOTOR HEATER
 - POT-SLIDEREAD TRANSMITTER
- (SEE CERTIFICATION SHEET IF REQUIRED)
 J1-CONNECTOR FOR MODULAR 20 PINS
 CR1-OPEN PC CONTROL RELAY & CONTACT
 CR2-CLOSE PC CONTROL RELAY & CONTACT



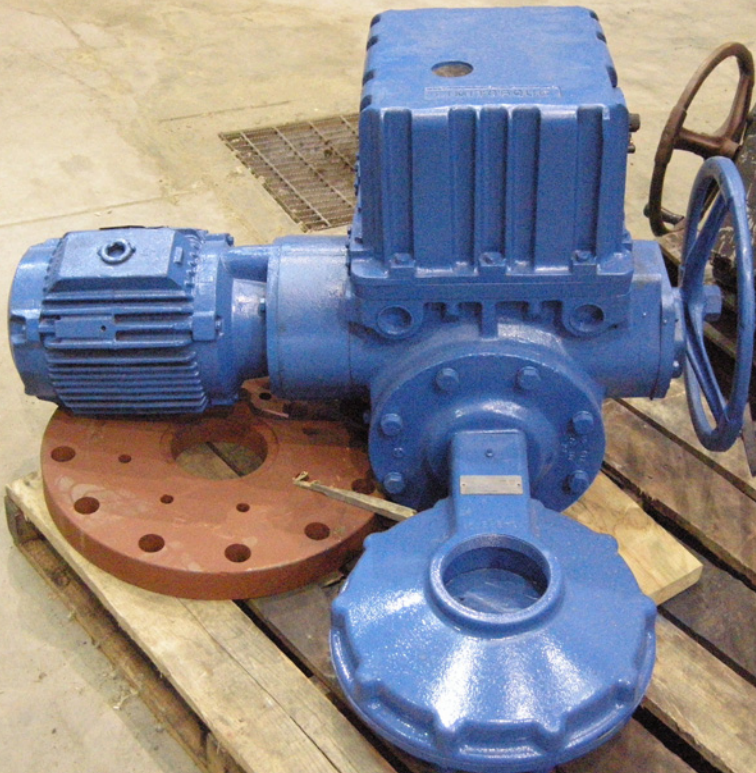
ELECTRICAL COMPARTMENT

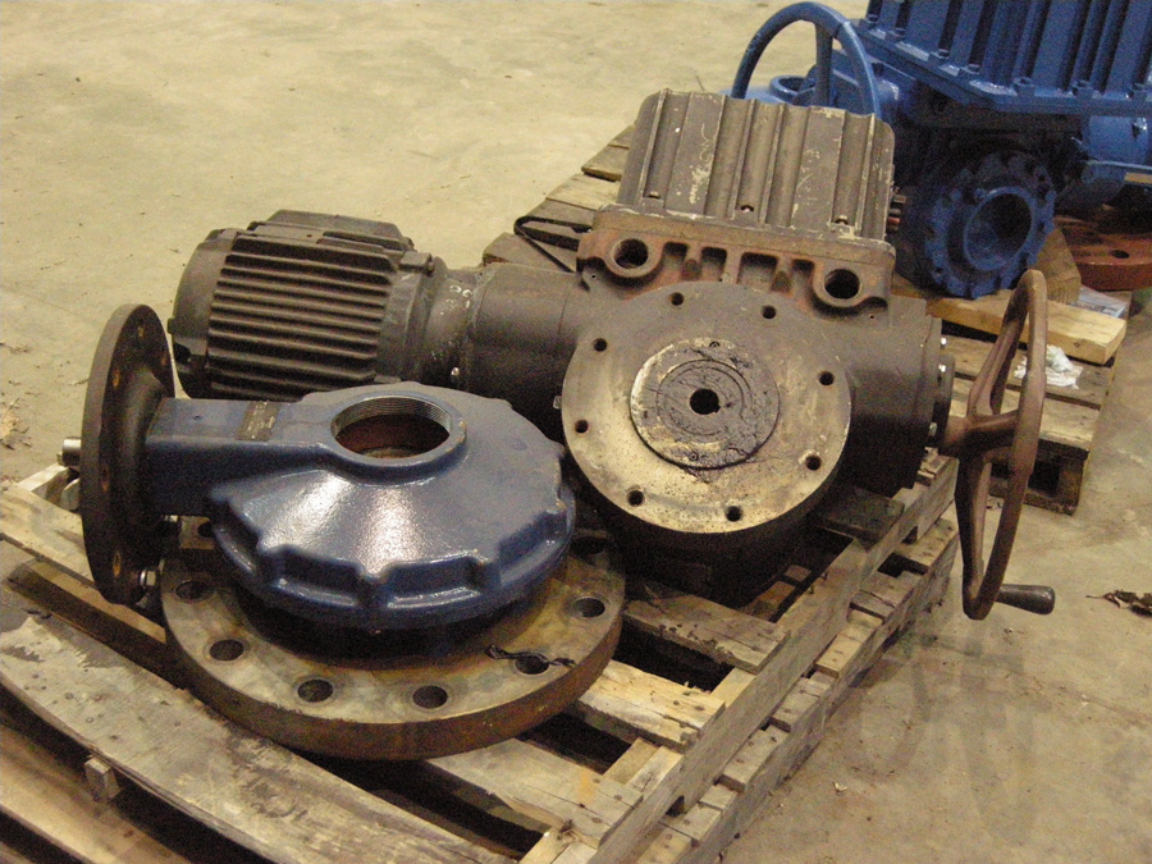
NO.	DESCRIPTION	DATE	REVISION

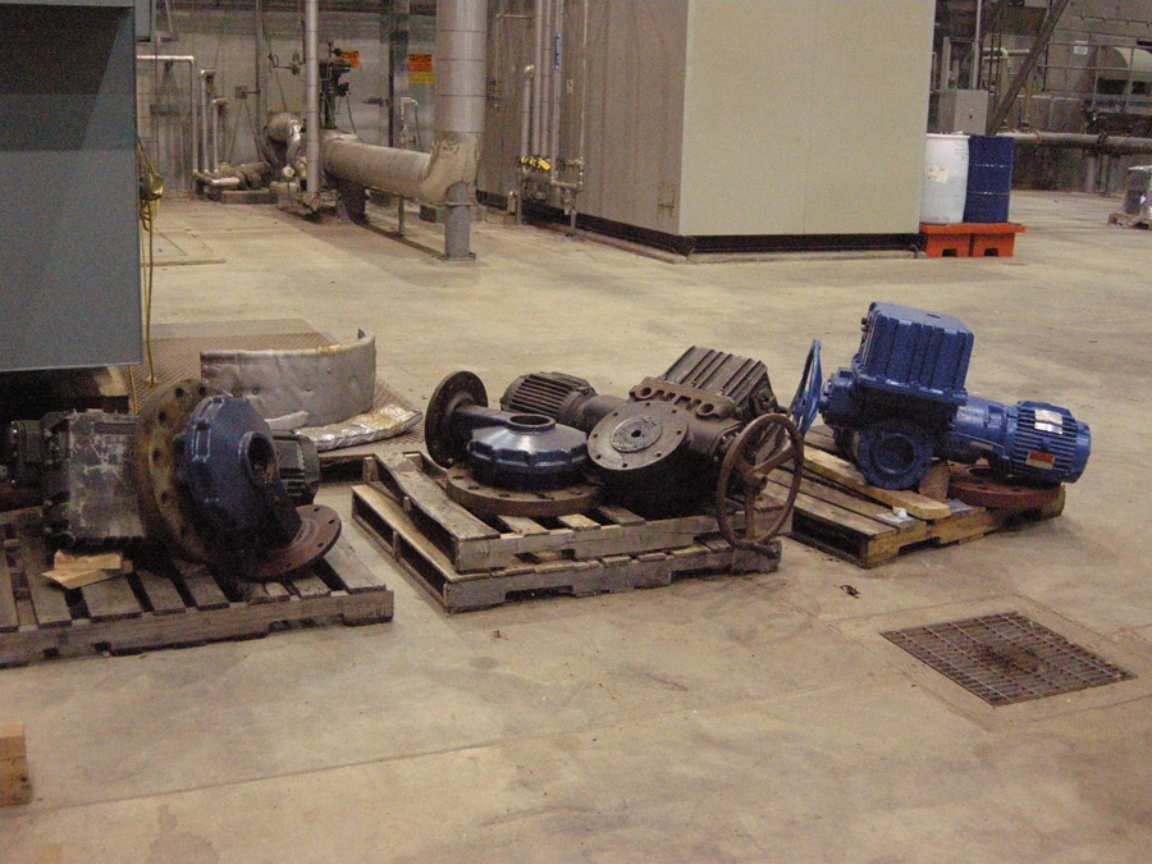
DESIGNER	KEH	TITLE	LIMITORQUE CORPORATION
APPROVED	ML	DATE	10/17
DATE	10/17	REVISION	136772
			10-17-88

16-476-1183-3

- 17 CLOSING TORQUE SWITCH INTERRUPTS CONTROL CIRCUIT IF MECHANICAL OVERLOAD OCCURS DURING CLOSING CYCLE
- 18 OPENING TORQUE SWITCH INTERRUPTS CONTROL CIRCUIT IF MECHANICAL OVERLOAD OCCURS DURING OPENING CYCLE







FLowsERVE

Limitorque
Lyndhurst, NJ USA

TYPE	B320	SIZE	7012112211
RATIO	6 T01		
ORDER	72121-004	SERIAL	L785835